



Dissolv-Away Tool Cleaner



Description:

Dissolv-Away Tool Cleaner is an Eco friendly, specially formulated industrial strength product that will remove Rust, Lime-Scale and Concrete from tools, equipment and most surfaces. Dissolv-Away Tool Cleaner can be used on acid resistant natural stone such as granite, ceramics, porcelain and acid resistant tiles. Always pre-test in an inconspicuous area for product suitability.

- **Features:**

- * Safe on most surfaces including glass, sealed tiles, painted surfaces, plastics, stainless steel, brick and aluminium.
- * Non Flammable.
- * Low Odour.
- * Water Based.
- * Non VOC's or HAP's.
- * Environmentally sensitive.
- * Significantly safer than Hydrochloric Acid and Phosphoric Acid based removers.
- * Highly effective in the removal of surface rust and calcium build up.
- * Highly effective at penetrating and dissolving concrete.
- * Dissolv-Away Tool Cleaner can be used full strength for heavy duty or diluted for light soil and surface rust.

- **Uses:**

- * Dissolv-Away Tool Cleaner removes rust, scale and concrete from hand tools, construction equipment, garden tools, chains and many other items to as new condition.
- * Takes rust and rust stains off concrete and tiles.
- * Is ideal in removing grout haze from fresh laid tiles.
- * Will remove plaster runs and splatter from brickwork, tiles and tools.

Directions:

Cleaning tools.

Rust: Fill a small tray or bucket with Dissolv-Away Tool Cleaner and submerge the rust covered item into the solution. Allow it to soak overnight and watch the rust disappear bringing it to near new condition. For items that have a tin element in their composition a light buff with a scourer will remove any black residues.



Dissolv-Away Tool Cleaner



Concrete : Spray Dissolv-Away Tool Cleaner on to tools or surfaces covered with concrete or mortar smears. Allow the solution to penetrate into the concrete for approx.. 15-20 minutes. Ensure the area to be cleaned remains wet by applying Dissolv-Away Tool Cleaner frequently to the surface. When the concrete has turned to a paste scrub the area with a brush or use a power washer to remove the dissolved concrete. For heavy encrusted tools we suggest soaking the item overnight in a tray or bucket. The results will amaze you.

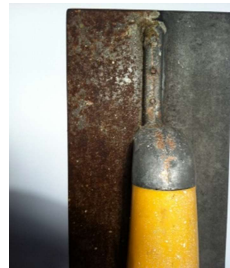
Masonry & Tiles- Same directions as with dealing with cleaning concrete off tools. For fresh grout haze dilute Dissolv-Away Tool Cleaner with fresh water to a ratio of 1 part Dissolv-Away to 2 parts water. For hard to remove stubborn stains and build up use full strength.

Storage: Store in a cool dry place out of direct sunlight. Keep out of temperature extremes.

Pack Size: Dissolv-Away Tool Cleaner is available in 750ml, 5 litre, 20 litre and 200 litre drums.

First Aid: Please refer to the Safety Data Sheet prior to opening or using the product.

Gallery of Results



You can restore rather than replace valuable hand tools.



Simply soak your tools back to as new condition. No harsh abrasives needed.

Dissolv-Away Tool Cleaner is available from: Synergy Building Supplies

236 Planet Street Welshpool WA 6106 Phone 1300 655 853

Email sales@oxide.com.au